

The material is 1/2" DIA 01 steel hardened to 50RC.

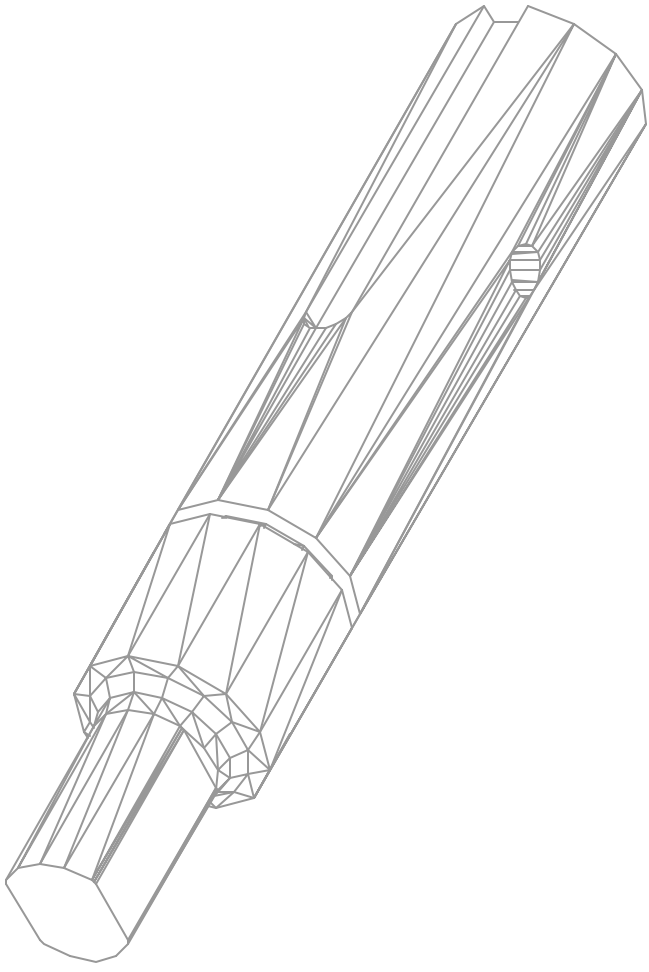
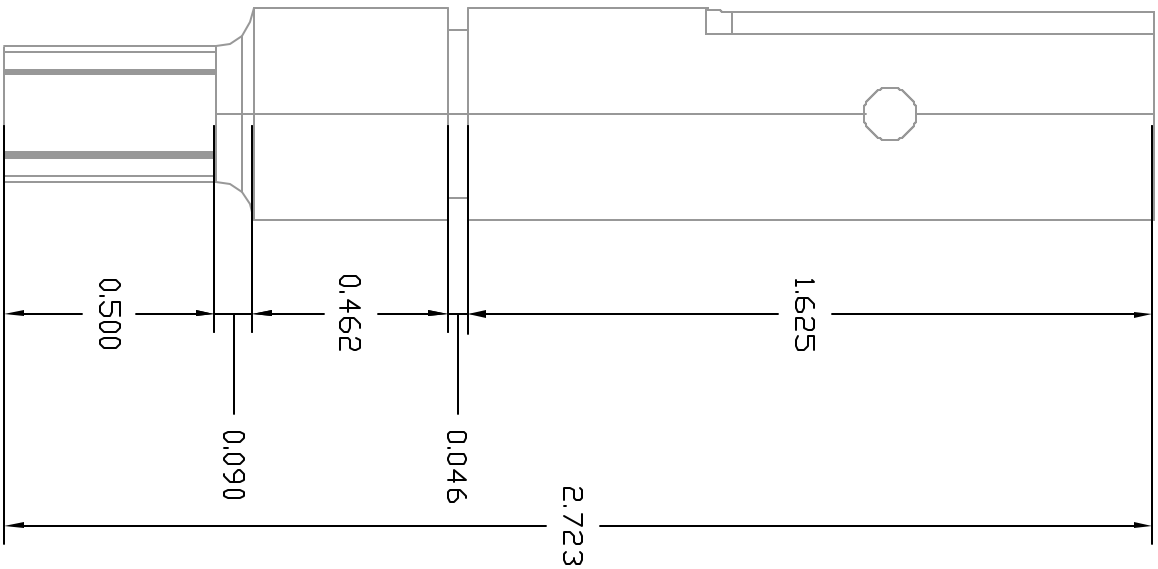
A keyway is needed for a 1/8" x 1" key that will secure the pulley from rotational movement.

The hole will hold a 1/8" shear pin to prevent lateral movement by the attached pulley. The hole is 3/8" from the end of the spindle, centered with the belt contact area of the pulley.

This slot is for a retaining ring. It's .046" wide, and .396" in diameter.

The area between the end and the main body of the spindle is radiused (.09") to prevent a stress point.

The shape at the end of the spindle should be machined to fit the receiving part provided. It is approx. .32" DIA with parallel flattened sides .25" apart.



Spindle

4/12/02

Clobberbots

Joseph P Feiber
4069 South Packard Avenue, St. Francis, WI 53235
414-482-8905